

Live. Work. Play.

LANDMARK TOWERS



A landmark signature mixed use development on the Victoria Island waterfront, Lagos, Nigeria

Our mission is to provide world class business environments to cater for Multi-National and domestic companies

01



Overlooking the Atlantic Ocean in the South

In the prestigious Victoria Island business district

An 8,000 sqm site on Water Corporation Road, Oniru

Easy access to the main arterial roads in both the East and West directions

Close proximity to top banking & financial institutions, International academic institutions, major retail outlets, International Hotel brands and Upmarket Ikoyi & Lekki residential suburbs



Project Description

The Landmark Group caters for companies seeking to conduct business in an executive one stop shop setting that boasts of standards and services comparable to the best Internationally



Landmark Towers is a luxury 9-floor mixed-use development located in Victoria Island business district of Lagos overlooking the Atlantic Ocean

The scheme comprises of retail & hospitality facilities, 6 floors of office space, a penthouse-level studio apartment floor, a beach front leisure complex and 133 (with 200 auxiliary) parking spaces

It's the ultimate expression of our Live, Work & Play phenomenon in one unit



Exceptional Value, unrivaled options

03



24-hour guaranteed electricity supply

Sophisticated smoke & fire detection system

Restricted card-controlled access to parking area

British Standard compliant Health & Safety features

State-of-the-art multi-faceted building management system



Facilities

Exceptional value, unrivaled options



04

Dedicated card-controlled elevator access to office and hotel floors respectively

24-hour guaranteed water supply with dedicated borehole and water treatment plant

Digital telephony plus high speed broadband Internet connectivity via fibre optic cabling

Health, fitness and leisure complex with gym, spa, swimming pool, tennis & squash courts

Round-the-clock CCTV monitoring at all main entrances, exits and lobbies with security guards



Knowledge meets experience

05



A world-class International project team, with extensive in-house technical knowledge of the Real Estate sector and lengthy experience of managing and delivering large-scale, high quality projects in Africa, has been assembled to deliver the Landmark Towers Development Project



Space Schedule

An assortment of options to suit your lifestyle



Function	Level	Area (sqm)
Leisure Complex (inclusive of a Tennis Court & Swimming Pool)	0 & 1	2140
Restaurant & Lounge / Bar	1	400
Retail	1	570 (5 units)
Open Office	2 - 7	7500
Studio Apartments	8	1248 (22 apartments)



We have created Interior environments that provide functionality, space, beauty and comfort



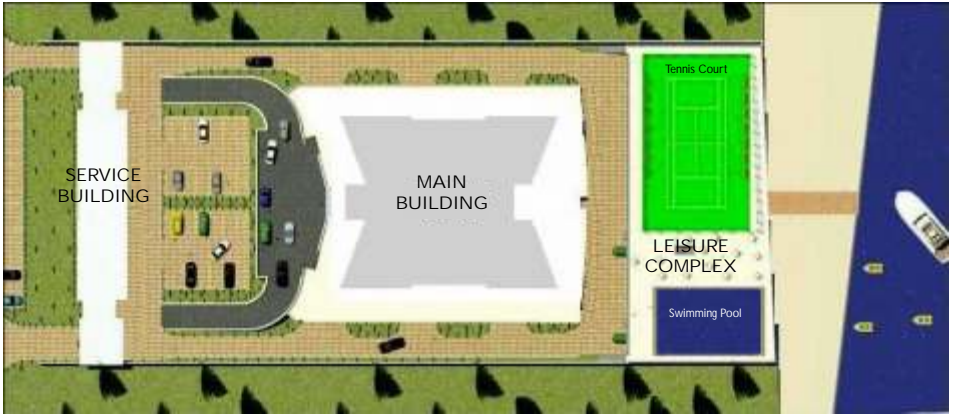
Client List

In Africa, Landmark is currently home to some of the world's largest and most successful companies

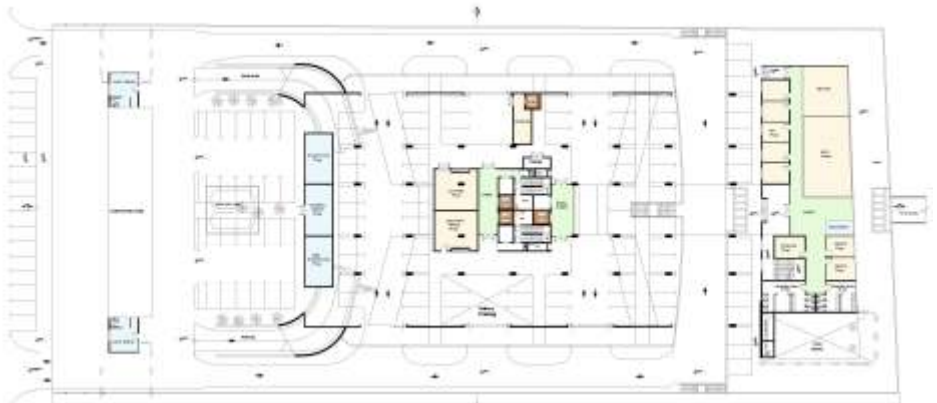


Generous open space and parking

09



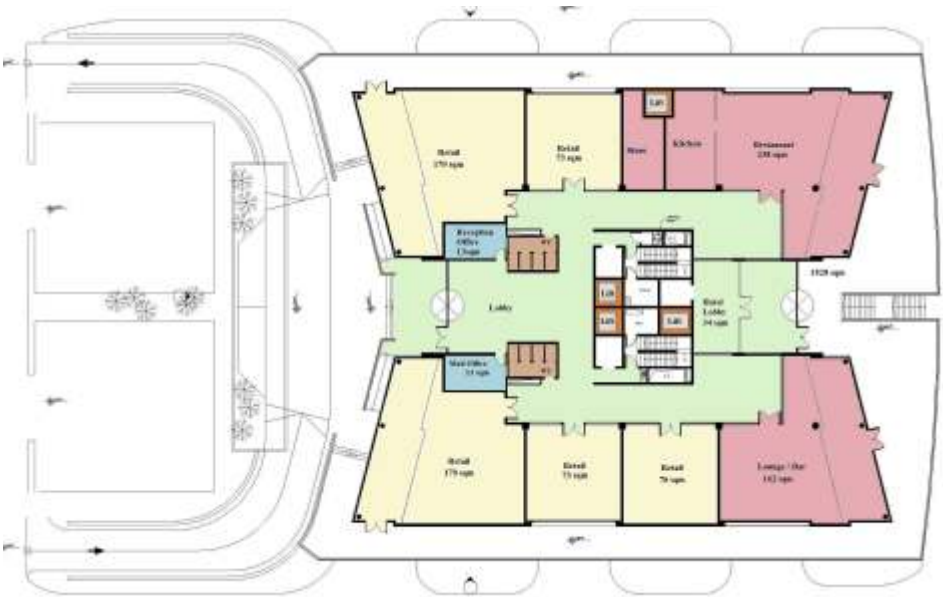
SITE PLAN



GROUND FLOOR (LEVEL 0)



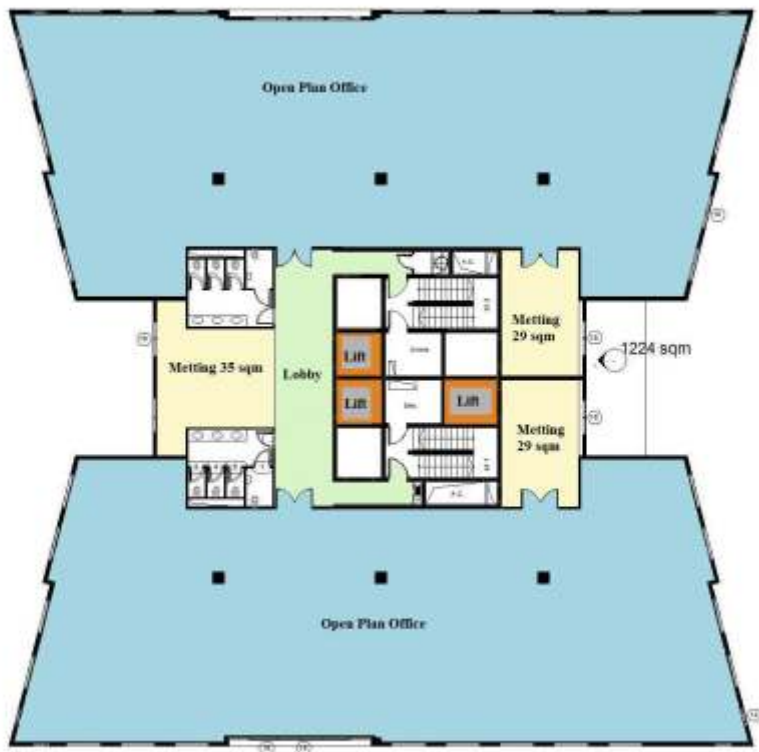
Form follows function



MAIN ENTRANCE FLOOR (LEVEL 1)



Generous office floor plate



OFFICE FLOOR (LEVELS 2 - 7)



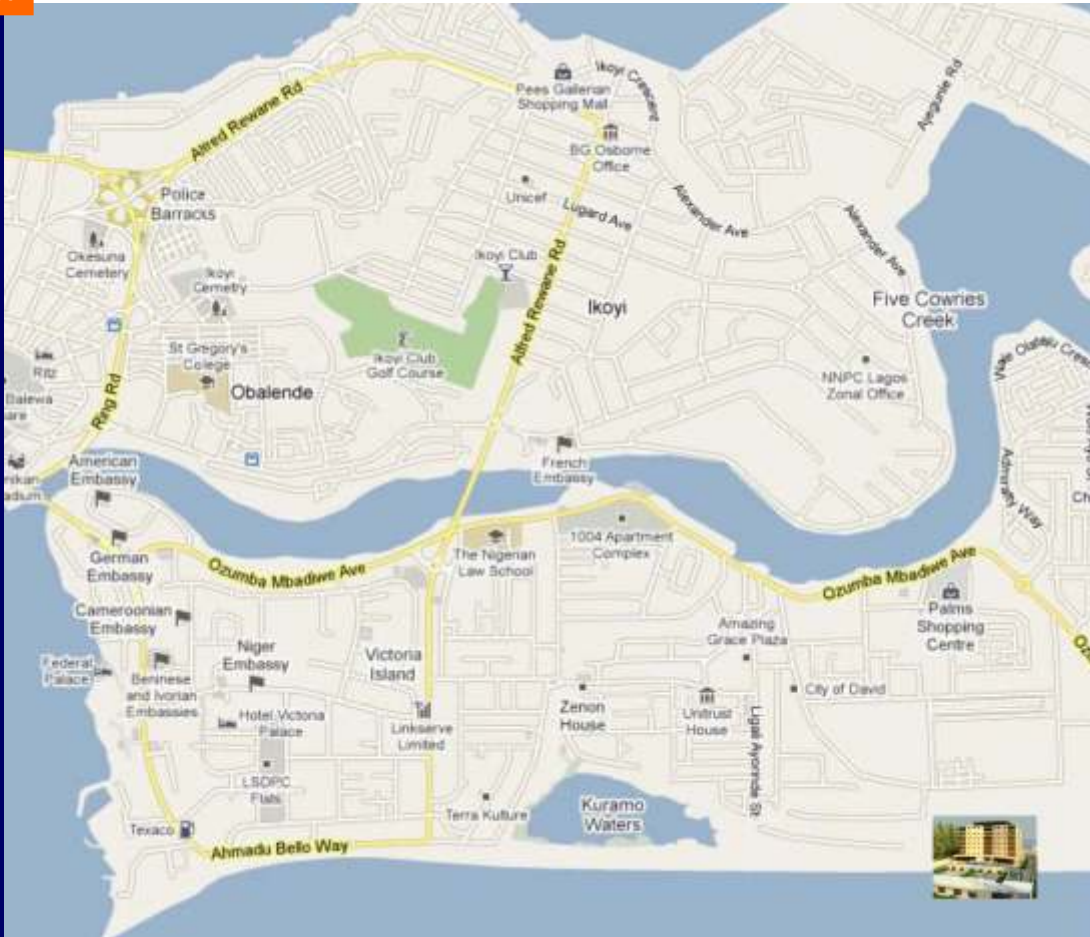
Fully serviced, furnished and equipped apartments



STUDIO APARTMENT FLOOR (LEVEL 8)



Located in the most desirable location in Lagos



Flexible Office Space

You can't do tomorrow's work in yesterday's office



Mulliner Towers - Lagos
Landmark Virtual Offices (Nig) Ltd
Mulliner Towers, 39 Alfred Rewane Road, Ikoyi, Lagos, Nigeria
+234 1 463 8331



Laiboni Centre - Nairobi
Landmark Virtual Offices (Kenya) Ltd
Laiboni Centre, Lenana Road, Kilimani, Nairobi, Kenya
+254 20 493 8000



GNAT Building - Accra
Landmark Virtual Offices Ltd
GNAT Heights, 30 Independence Avenue, Accra, Ghana
+233 307 010 963



The Place - Johannesburg
Landmark Virtual Offices (Pty) Ltd
The Place, 1 Sandton Drive, Sandton, 2196, Gauteng, Johannesburg, South Africa
+27 11 269 4300



Landmark House - London
Landmark Virtual Offices Ltd
Landmark House, 17 Hanover Square, Mayfair, London, W1S 1HU, England
+44 207 529 1400



Park Avenue, Manhattan - New York
Landmark Virtual Offices LLC
230 Park Avenue, 10th Floor, Manhattan, New York Ny10169, U.S.A
+1 212 808 6519





LANDMARK

CONTACT US

Landmark Village
Plots 3 & 4, Water Corporation Road, Oniru,
Victoria Island, Lagos, Nigeria

+234 1 840 1441

+234 1 841 8428

+234 807 555 0555

www.landmarkafrica.com

property@landmarkoffice.com

JOHANNESBURG

NAIROBI

ACCRA

LONDON

NEWYORK

+27 11 269 4300

+254 20 493 8000

+233 30 701 0963

+44 20 7529 1400

+1 212 808 6519

Live. Work. Play.